



# GFI MailArchiver

## for Exchange

Exchange Server email archiving, management and compliance

Companies' dependency on email to do business brings with it various problems. Storage limitations, backups, problematic PST files, access to old emails and compliance or eDiscovery are a few issues that arise. Failure to address them effectively could have serious repercussions on the organization.

One way to address each problem with a single solution is to implement GFI MailArchiver, an email archiving and email management software package for Exchange Server. With over 10,000 customers, GFI MailArchiver is the no.1 email archiving software and it is used by administrators to maintain an archive of all email correspondence, significantly reduce the demands on the Exchange server, reduce dependency on PST files and adhere to regulations on compliance, eDiscovery and other laws. Furthermore, it is easy to install and ships at the lowest price on the market.

When GFI MailArchiver is installed, all email is stored in a central location that is easily accessible in two ways – through a folder in the Outlook email client or using a web browser. The method used to integrate with Outlook is an industry first because the technology does not use stub files which is what most products use.

Using the auditing functionality, management can access any email that is requested for ediscovery compliance purposes and guarantee that these emails have not been tampered with.

### With GFI MailArchiver, management benefits from:

- Access to emails if required for ediscovery and email compliance purposes, internal inquiries and employee monitoring; and a safeguard in customer lawsuits.
- Auditing functionality that guarantees stored emails are genuine and have not been tampered with.

### With GFI MailArchiver, network administrators can:

- Allow users to access their emails from Outlook but without the problems associated with stub files on Exchange, an industry first for GFI MailArchiver
- Reduce your message store size, improve Exchange performance and reduce reliance on PST files
- Archive past, present and future emails into one or multiple databases and avoid complex backup plans.

### With GFI MailArchiver, employees can:

- Instantly access archived email directly from Outlook or using the GFI MailArchiver web interface
- Use advanced email search and 'Saved Search' capabilities.

#### Benefits

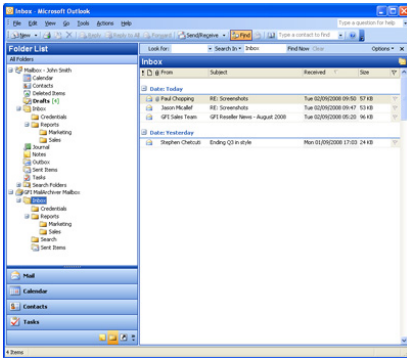
##### Why choose GFI MailArchiver?

- Lowest price on the market
- Tens of thousands of customers
- Support for the industry leading messaging platforms including Microsoft Exchange 2000, 2003 and 2007
- Employees can search for and retrieve old emails
- Auditing functionality to meet compliance/legal requirements.

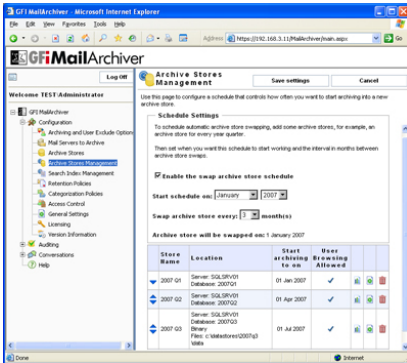
#### Features for the administrator

##### ■ Multi-lingual Support for indexing emails

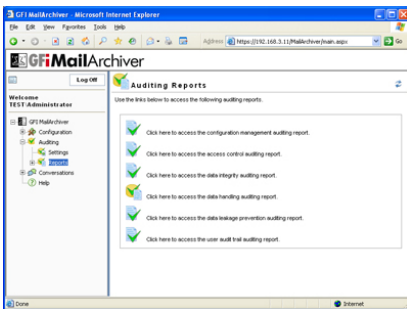
The new version ships with multi-lingual support. During installation of GFI MailArchiver, administrators have an option to select the language/word breaker to be used when indexing emails. This is useful for customers or organizations who receive emails in the following languages: English, Dutch, French, German, Italian, Russian, Spanish, Czech, Arabic, Hebrew, Japanese, Korean, Traditional Chinese and Simplified Chinese.



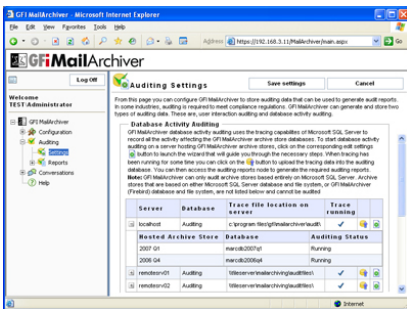
The GFI MailArchiver Mailbox folder in Microsoft Outlook (Outlook Connector)



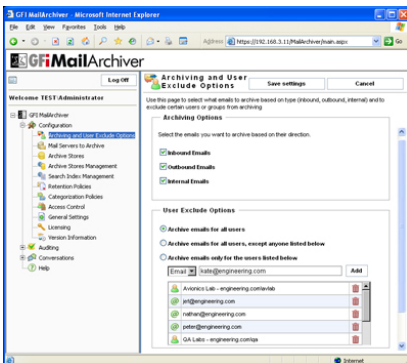
Archive stores management



Auditing reports



Auditing database activity – auditing settings



Archiving and user exclude options

## ■ Integration with Exchange and other email servers

GFI MailArchiver leverages the journaling feature of Exchange Server, providing unparalleled scalability and reliability. Other email archiving solutions actually replace the email with a link to their database – this can be a point of failure and can bring down your entire email system. GFI MailArchiver works in parallel and does not touch the way Exchange works. GFI MailArchiver can be used with Exchange as well as other email servers with the capability of polling emails from a mail server which supports IMAP and Active Directory.

## ■ Outlook integration – with industry first non-stubbing technology

Integration with Outlook means that archived email can be accessed from Outlook as if it were in an Exchange mailbox or a local PST file. While other products offer Outlook integration, GFI MailArchiver does so without using stub files; a method that is discouraged by Microsoft and which creates problems for administrators because small portions of emails are still left in the Exchange Server store, thus having a negative effect on server performance. GFI MailArchiver's non-stub approach to Outlook integration is an industry first and the software also provides administrators with full real-time synchronization of all folders/mails in the Exchange mailbox.

## ■ Automatically archive corporate email into one storage area

Your mail server is not the ideal place to store all organizational email: Over time this will cause a severe decline in email performance. Moving old emails into a database will keep your mail server performance high and email stores compact. You may archive your email in:

- **A SQL database:** Because email is stored in a standard SQL database, it is easy to backup and restore; no special Exchange backup tools are required. This setup is strongly recommended for high email volume environments.
- **Directly to an NTFS hard drive:** You may store email in a database that is located on an NTFS-formatted hard drive, saving you the license costs of Microsoft SQL Server! This setup is suitable for low email volume environments and for small enterprises intending to save on license costs of Microsoft SQL Server.

## ■ Multiple database support and 'automatic' database management support

It is possible to archive emails in multiple databases – this overrides the problem of having one large database that becomes slow and requires more maintenance. GFI MailArchiver allows you to automatically archive emails to a new database after a specified time, for example, every month or quarter.

## ■ Reduce email storage requirements

GFI MailArchiver compresses and decompresses attachments on the fly, which results in considerable savings in terms of storage when compared to storing attachments in the Exchange stores. In addition, storing email in a database is more space efficient than storing in PST files. An added advantage is that GFI MailArchiver archives only one copy of attachments sent to multiple recipients.

## ■ End PST hell

Using GFI MailArchiver for Exchange eliminates the need for users to archive their mail in PST files on local hard disks. These PST files end up being very large and are difficult to backup and search. Many users do not know how to organize their PST files properly. With GFI MailArchiver, users can browse to the web search interface and retrieve past email from the database, rather than having to dig through a store of PST files on disk to find a particular email.

## ■ Migrate old PST files stored on client machines

Through GFI MailArchiver's agent-based PST Exporter, you can archive emails processed by Microsoft Exchange prior to the installation of GFI MailArchiver. The GFI PST Exporter uses the GFI MailArchiver Import Service to transfer emails to an archive store without any end-user intervention. Agents save extracted emails in a destination folder and the GFI MailArchiver Import Service then imports the extracted emails into a GFI MailArchiver archive store.

### ■ Set up email retention and categorization policies

Setting up an email retention policy is critical and while email archiving is essential, retaining emails for an indefinite time is costly! With GFI MailArchiver you can create rules to delete one or more emails after a specific time, for example, you can delete all emails sent by the Marketing Department that are older than 7 years. In addition, GFI MailArchiver can help you to categorize emails by adding a label to the emails that meet a particular condition. For example, emails sent from the CEO, could be automatically labelled with [CEO].

### ■ Helps comply with Sarbanes-Oxley Act

By archiving all company email, GFI MailArchiver helps organizations to meet regulatory compliance such as the Sarbanes-Oxley Act. Under the Sarbanes-Oxley Act 2002 and Security and Exchange Commission (SEC) rules, public companies must prove that their internal controls and audit trails are sound and that their processes are capable of producing certifiably correct data. Companies must retain all correspondence created, sent, or received "in connection with an audit or review" of a public company for a period of seven years, during which time these records must be non-erasable and non-rewritable. This includes any "electronic records" such as email, particularly relating to subjects, departments or individuals involved in auditing procedures. Failure to comply is a crime, punishable by up to 10 years in jail.

### ■ Helps to comply to other acts and regulations

GFI MailArchiver is also a valuable tool that aids compliance with the following: E-Comm Act 2000, BS7799-2:2002, Enterprise Act 2002, Decreto del Presidente del Consiglio dei Ministri (8 febbraio 1999) and more.

### ■ Give viewing rights and exempt users from archiving email

GFI MailArchiver allows you to grant a user viewing rights to all email relating to a specific Active Directory Group, for example, the Sales Manager would be able to view all emails sent or received by his team. Also, if required, you can instruct GFI MailArchiver for Exchange not to archive email to/from particular users, for instance it is possible not to archive emails sent to/from the HR Manager.

### ■ Collect and archive emails in one geographical location

GFI MailArchiver provides the possibility of centralizing email archiving to one physical location by polling emails from multiple locations. For example, an organization that operates in the US, UK and Australia may want to archive email of all offices centrally in one location – the US office.

### ■ Audit your archived email to ensure they have not been tampered

GFI MailArchiver ships with auditing functionality that ensures all archived emails have not been tampered with. This is particularly important in industries and countries where regulations require organizations to monitor user activity and keep audit trails of such activity.

## Features for the user

### ■ Integration with Microsoft Outlook

GFI MailArchiver can now be used to seamlessly access archived mail from Outlook as if it were in the Exchange mailbox or local PST file. With this new feature, GFI MailArchiver will offer a better user experience than other products on the market today that use Outlook stubs.

### ■ Support for multilingual user interfaces

GFI MailArchiver provides support for multilingual user interfaces including English, Dutch, French, German, Italian, Russian, Spanish, Czech, Arabic, Hebrew, Japanese, Korean, Traditional Chinese and Simplified Chinese.

### ■ Access emails from any location through a browser

GFI MailArchiver allows users to access their emails from anywhere in the world by using a browser. Emails that had been deleted may also be seen (and restored).

## System requirements

- Windows 2000 (Service Pack 3 or higher), Windows 2003 or Windows 2008 server
- Access to Microsoft Exchange Server 2000 or later
- Microsoft .NET Framework 2.0
- Internet Information Services (IIS) – World Wide Web service.

## Awards



**Download your evaluation version from <http://www.gfi.com/mailarchiver/>**

GFI Software  
Magna House, 18 – 32 London Road  
Staines, Middlesex  
TW18 4BP  
UK  
Tel +44 (0) 870 770 5370  
Fax +44 (0) 870 770 5377  
sales@gfi.co.uk

GFI Software  
15300 Weston Parkway  
Suite 104  
Cary, NC 27513  
USA  
Tel +1 (888) 243-4329  
Fax +1 (919) 379-3402  
sales@gfiusa.com

GFI Asia Pacific Pty Ltd  
83 King William Road  
Unley 5061  
South Australia  
Tel +61 8 8273 3000  
Fax +61 8 8273 3099  
sales@gfiap.com

GFI Software  
GFI House  
San Andrea Street  
San Gwann SGN 1612  
Malta  
Tel +356 2205 2000  
Fax +356 2138 2419  
sales@gfi.com

**Microsoft**  
GOLD CERTIFIED  
Partner

**GFI**  
www.gfi.com